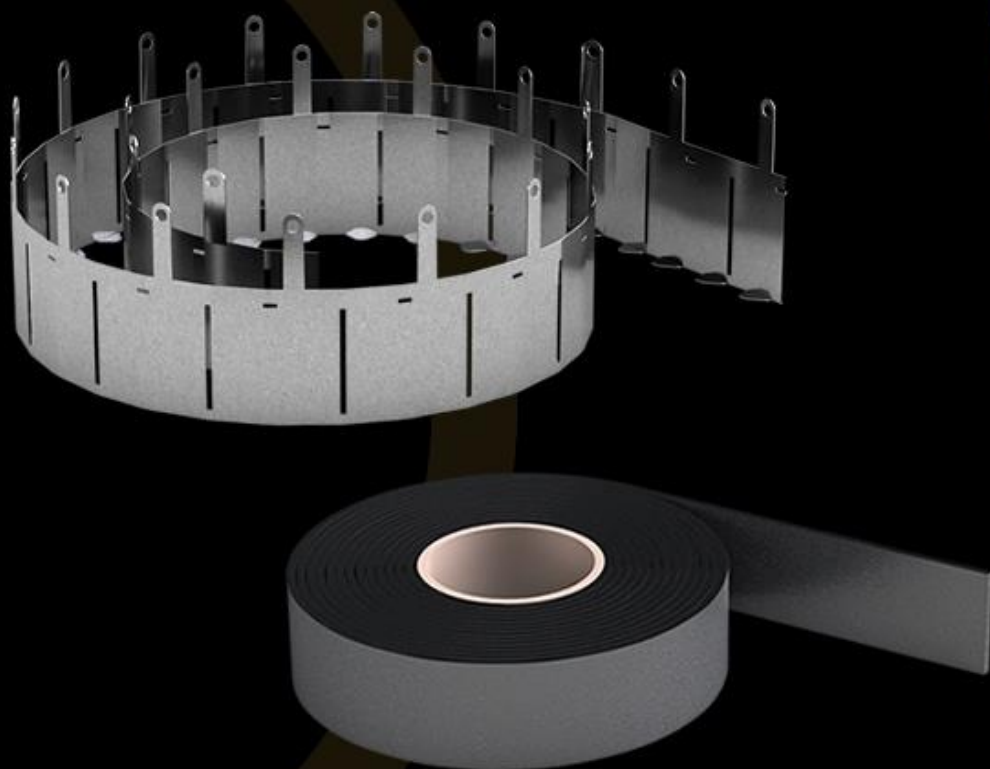


INTU FR COLLAR L

Intumescent pipe collar roll

TDS Technical Data Sheet



INTUSEAL®
passive fire protection manufacturer

CE



www.intuseal.com

INTU FR COLLAR L

Intumescent pipe collar roll

TDS Technical Data Sheet

INTUSEAL[®]
passive fire protection manufacturer

→ PRODUT DESCRIPTION

Firestop collar **INTU FR COLLAR L** is composed of:

- 1) a flexible insert (**INTU FR WRAP L**) made of graphite-based material that swells under the influence of temperature above 140°C and
- 2) an external casing made of 0.5 mm stainless steel sheet delivered in 2.5 m sections. The steel collar casing is equipped with mounting brackets for attaching the collar to the partition. The universal size enables installation of the collar on various pipe diameters.

→ APPLICATION

INTU FR COLLAR L is used for fire protection of penetrations with non-combustible pipes with flammable synthetic rubber insulation running through fire partitions.

Rigid walls:

The wall must be at least 150mm thick and have concrete, cellular concrete structure or masonry structure, with a minimum density of 600kg/m³

Rigid floors:

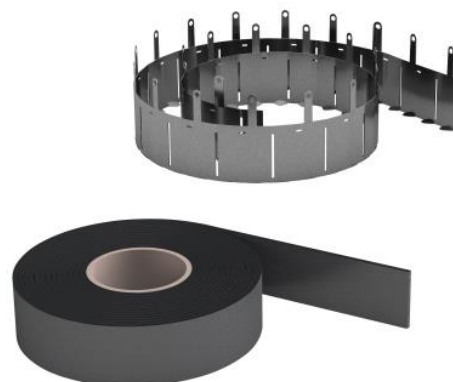
The floor must be at least 150mm thick and have concrete, cellular concrete structure or masonry structure, with a minimum density of 1700kg/m³

→ AVAILABILTY, DIMENSIONS

Type	Art. No.	Length
INTU FR COLLAR L	INCOL2500	2,5 m

→ COMPLIANCE:

- Reference standard:
EN 1366-3 / ETAG 026-2 / EAD 350454-00-1104
- DoP 3/2019
- ETA-19/0844
- CoC 1488-CPR-0825/W
- TDS
- SDS
- Fire classification 03777/18/Z00N2P



→ TRANSPORT AND STORAGE

Store in dry and cool conditions;
at a temperature from + 5°C to + 25°C.

INTU FR COLLAR L

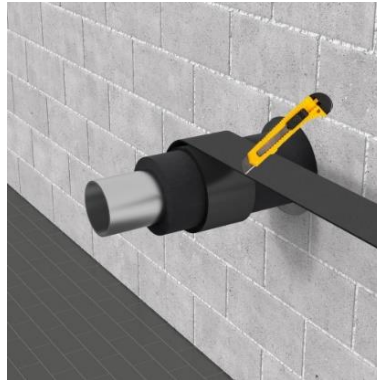
Intumescent pipe collar roll

TDS Technical Data Sheet

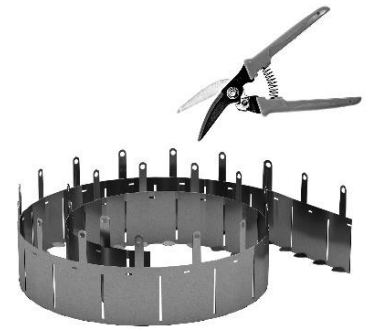
➔ INSTALLATION METHOD



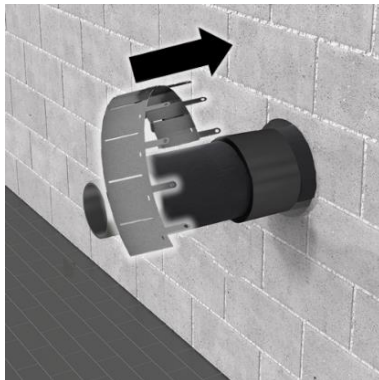
1. Set number of wraps for diameter/type of the pipe and partition parameters.



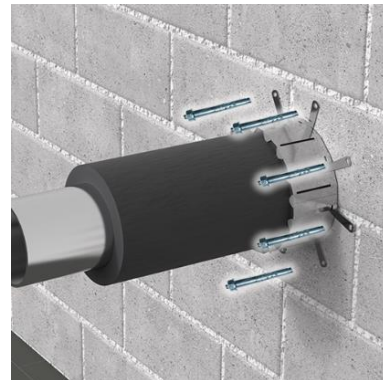
2. Fill the gaps with the fire-resistant acrylic **INTU FR MASTIC**, then wrap the pipe with **INTU FR WRAP L** tape with the appropriate number of wraps.



3. Cut appropriate length of the steel casing.



4. Put the collar on the intumescent tape already placed on the pipe.



5. Attach the collar to the partition using steel screws.

➔ FIRE RESISTANCE CLASSIFICATION

COLLAR	DN	Insulation thickness	Wall	Floor
STEEL + SYNTHETIC RUBBER	42,4mm	9mm	EI240	EI240
		50mm	EI120	EI120
	88,9mm	9mm	EI90	EI120
		23mm	EI120	EI90
		50mm	EI90	EI120
	159,0mm	9mm	-	EI120
50mm		-	EI90	
COPPER + SYNTHETIC RUBBER	15,0mm	9mm	EI240	EI120
		50mm	EI240	EI90
	54,0mm	9mm	EI60	EI120
		50mm	-	EI90

INTU FR COLLAR L

Intumescent pipe collar roll

TDS Technical Data Sheet

➔ SOLUTION DETAILS

PROTECTION IN WALLS

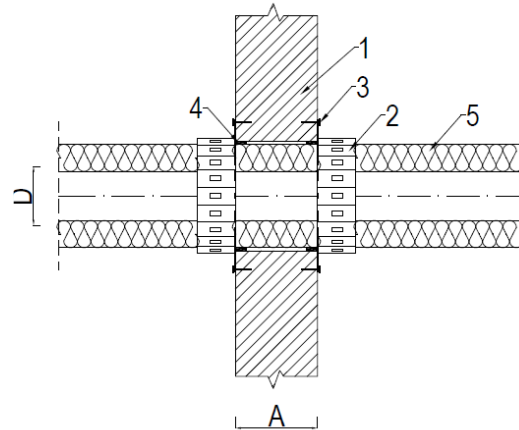


Fig. 1. Wall penetration

D – pipe diameter, A – wall thickness

- 1 – rigid wall ($A \geq 150$ mm)
- 2 – **INTU FR COLLAR L**, installed on both sides of the wall
- 3 – steel screw
- 4 – a gap around the collar, on both sides of the partition, filled with intumescent acrylic mastic
- 5 – non- combustible pipe insulated with synthetic rubber
- * - number of wraps according to TDS **INTU FR WRAP L**

PROTECTION IN FLOORS

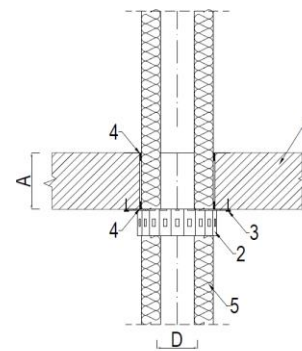


Fig. 2. Floor penetration

D – pipe diameter, A – wall thickness

- 1 – floor ($A \geq 150$ mm)
- 2 – **INTU FR COLLAR L**, installed from the bottom of the floor
- 3 – steel screw
- 4 – a gap around the collar, on both sides of the partition, filled with intumescent acrylic mastic
- 5 – non- combustible pipe insulated with synthetic rubber
- * - number of wraps according to TDS **INTU FR WRAP L**